



Aviation Technical Bulletin

Route to:

SERVICE
MANAGER

SALES
MANAGER

BULLETIN
BOARD

Bringing Power to Flight

August, 1987

No. 87-10

CHAMPION CH34406 IGNITER

The CH34406 is a low voltage series igniter used in Pratt & Whitney-Canada PW100 series engines. A semi-conductor material bridges the electrodes and is required for the proper function of ignition. When servicing this type of igniter, care must be taken so as not to disturb the semi-conductor material. This igniter replaces CH34055 in PW100 series engines only.

CLEANING

1. Wipe combustion deposits from exterior with a lint-free cloth.
2. DO NOT DISTURB THE COMBUSTION DEPOSITS IN THE GAP AREA.

NOTE: If gap area deposits must be removed for a closer inspection, they may be removed by a wood scraper. DO NOT TOUCH SEMI-CONDUCTOR SURFACE DEPOSITS IN THE GAP AREA: they aid plug operation. The semi-conductor may show signs of uneven erosion. This is normal and not a cause for rejection.

3. Terminal well may be cleaned with a felt swab saturated in mineral spirits, methyl, or alcohol, using caution not to damage the terminal pin.

INSPECTION

1. Visually check for mechanical damage. Reject if it shows impact damage, if connector well or firing end insulator is cracked or loose, or if connector pin is badly bent or broken.
2. Check firing end shell for chafing or fretting wear. This wear is not to exceed .015. If this wear is more than one-half the circumference of the shell, reject.
3. Reject if shell body is swollen or distorted.
4. Check igniter plug for electrical erosion. If erosion is equal to, or exceeds this measurement, reject.

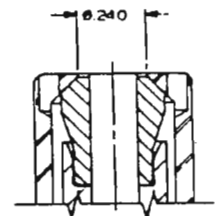
SEE ILLUSTRATIONS

TESTING

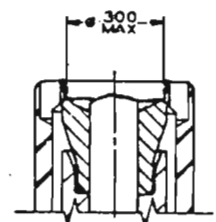
1. Spark test. Test at normal open air pressure using the standard engine ignition unit, including the shielding lead and terminal fittings.
2. Connect the ignition unit to the igniter.
3. Clamp the igniter with the firing end up.
4. Switch on the ignition unit. Wait 30 seconds. (If misfiring or irregularity in spark occurs, discard the igniter).
5. Turn off the ignition unit.

WARNING: THE OUTPUT OF THIS IGNITION SYSTEM IS SUFFICIENT TO CAUSE A LETHAL ELECTRICAL SHOCK. DO NOT TOUCH ANY EXPOSED OR LIVE PORTION. ALWAYS DISCONNECT LEADS FROM INPUT POWER SOURCE AND WAIT AT LEAST ONE MINUTE TO PERMIT STORED ENERGY TO DISSIPATE BEFORE WORKING WITH IGNITION UNIT.

6. Wait for at least one minute to elapse; disconnect the igniter from the ignition unit; unclamp the igniter.



NEW



USED

Champion Aviation Products: Your Blueprint for Performance